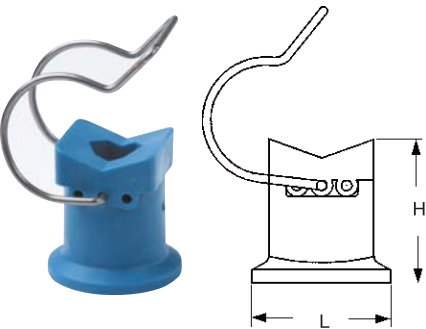


ASSEMBLY ACCESSORIES

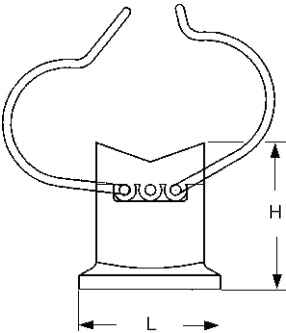
ZPG

PIPE HOLDERS



ZPG type pipe holders are an easy and convenient solution to hold spray manifolds on the tunnel walls in surface treatment plants and to speed up maintenance and cleaning operations. Their high quality springs are suitable both for steel and plastic pipes, with sizes ranging from 3/4 up to 1 1/2. These springs, manufactured in a special grade stainless steel, are heat treated and will not lose their elastic properties even after several disassemblies . Each ZPG holder can be equipped with two springs, to be used with heavy manifolds or pipes that are subject to strong vibrations. The below table shows the product codes for one and two springs holders.

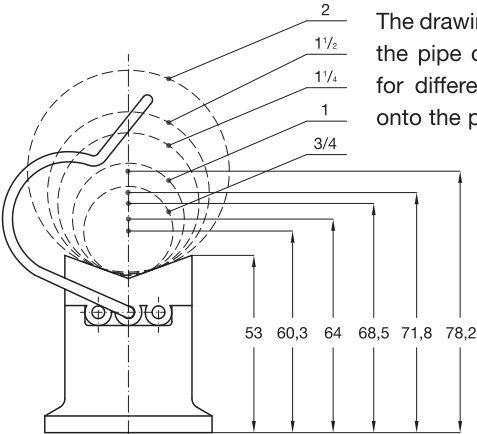
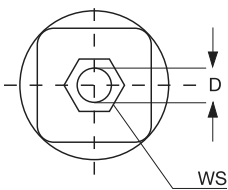
Materials    Body        D6    PP, chemically bonded fiberglass  
                 Springs    N1    AISI 302 Stainless steel, heat treated



Code Single spring	Double spring	PS inch	D mm	H mm	L mm	WS mm	W g
ZPG 1075 D6	ZPG 2075 D6	3/4	11	53	50	17	72
ZPG 1100 D6	ZPG 2100 D6	1					27
ZPG 1125 D6	ZPG 2125 D6	1 1/4					90
	ZPG 2150 D6	1 1/2					90
	ZPG 2200 D6	2					110

Weight values are based on the double spring version

The ZPG body is designed to be secured to the wall with one M10 bolt with hexagonal 17 mm head.



The drawing shows the distances of the pipe center axis from the wall, for different pipe sizes assembled onto the pipe holder.

